

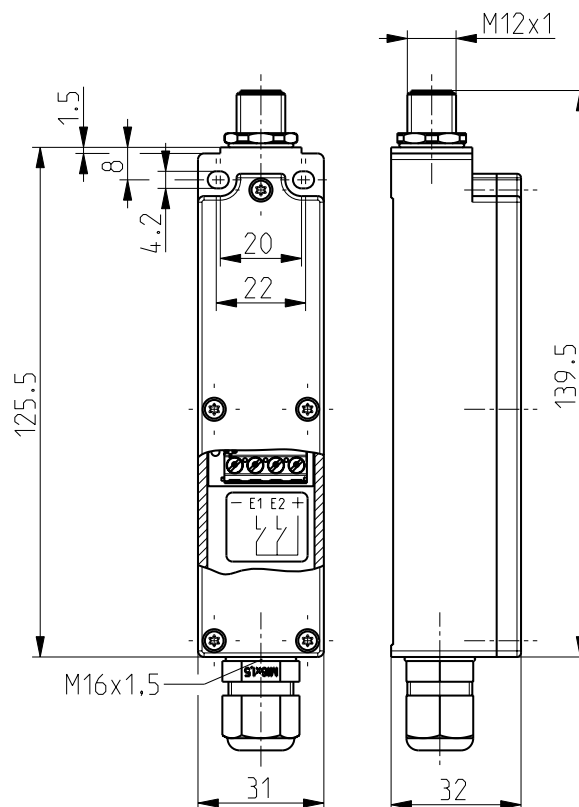


Universal transmitter with external power supply - 1 port RF 96 ST SW917 Vcc extern-NET Article no.: on request

Product features

- sWave.NET® wireless technology
- Cable-free - with cost savings for installation and maintenance
- Configurable online via wireless interface
- Simple operation and integration in existing ERP systems via Sensor Bridge
- High scalability - up to several hundred sensors in one application
- External power supply via M12 plug-in connector

Dimensions



General technical data

Applied standards

EN 60947-5-1, EN 61000-6-2, EN 61000-6-3, EN 61000-4-4, EN 61000-4-5, EN 61000-4-6, EN 301 489-1, EN 301 489-3, EN 300 220-1, EN 300 220-2

Enclosure

thermoplastic, glass-fibre reinforced, shockproof, self-extinguishing UL 94 V-0

Tightening torque

M4 enclosure mounting screws: max 1.2 Nm
M2.5 cover screws: approx. 0.45 Nm

Degree of protection

IP67 (IEC/EN 60529)

Voltage source

24 VDC

Connection

plug-in connector M12 x 1, 4-pole

Ambient temperature

-20 °C ... +65 °C

Switching frequency

max. 5 Hz

Rated operating voltage range U_B

10 ... 30 VDC Pin 1 and Pin 3 plug-in connector M12

Rated insulation voltage U_i

75 VDC

Rated impulse withstand voltage U_{imp}

0.5 kV

Rated operating current I_e

2.5 mA

Standby current

15 μ A (if sensor is not connected)

Voltage drop $U_e - U_a$

1.5 V

Load current

max. 100 mA

Errors and omissions excepted.



Universal transmitter with external power supply - 1 port RF 96 ST SW917 Vcc extern-NET Article no.: on request

General technical data (contd.)

Switching points
> 5 VDC (E1, E2)

Actuating time
min. 80 ms

Wireless approvals
Brazil: ANATEL 04172-18-06718

Mounting
screws M4

Wireless technology

Protocol
sWave.NET®

Frequency
917 MHz (Brazil)

Transmission power
< 25 mW

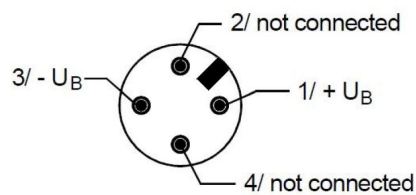
Data rate
66 kbps

Channel bandwidth
550 kHz

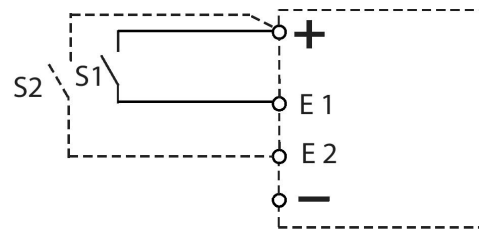
Wireless range
max. 450 m outdoors, max. 40 m indoors

Plug-in configuration / Power supply

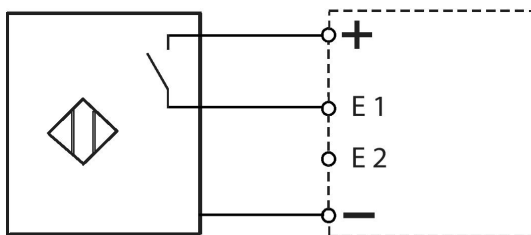
M12 x 1	
1 BN	+U _B
2 WH	NC
3 BU	-U _B
4 BK	NC



External switch contact



Sensors



Errors and omissions excepted.