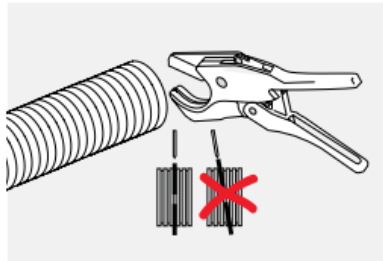
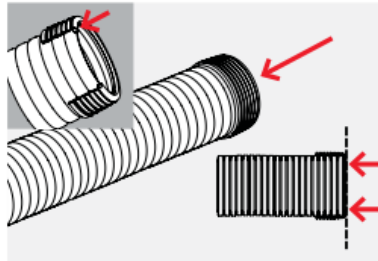


.steute

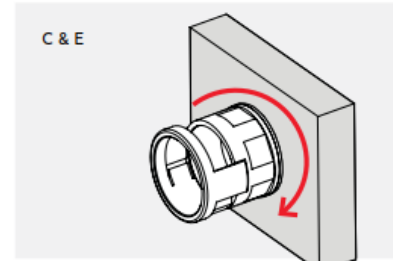
Installation of IP68 safety system (pat.)



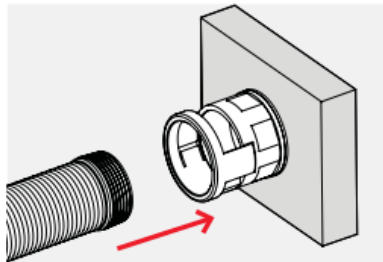
01. Straight cut of conduit



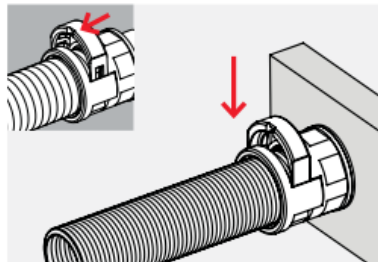
02. Push seal cap (B) completely onto conduit in order to achieve IP68.



03. Place seal (E) onto fitting thread (C) and screw in.



04. Push conduit with seal cap A+B) into the fitting until seal cap is no more visible in the locking element window.



05. Insert oval clip (D) in the locking element window and click into place. The screwdriver slot must point towards the conduit. To re-open use a screwdriver.

